

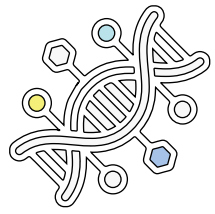


AM ALLMADE

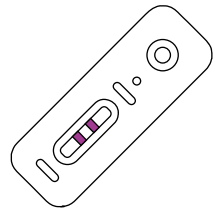
Global In-Vitro Diagnostics Company

www.allmade.co.kr

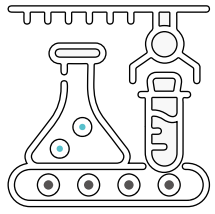
Business Area



Core Material for IVD
Developing & Supplying
Core raw materials for IVD



IVD Platform Open Innovation
Developing IVD products
across various platforms



IVD Foundry
Contract manufacturing
of IVD products

AllMade Corp. is a IVD specialist providing economical and effective diagnostic solutions.

From core materials to finished products,

We provide customized value through our integrated IVD Foundry System.



Customer Focus



Shared Growth



Sustainable R&D

AllMade Corp. pursues sustainable management based on innovative technology and transparent corporate culture to meet the demands of the modern era as a specialized IVD company.

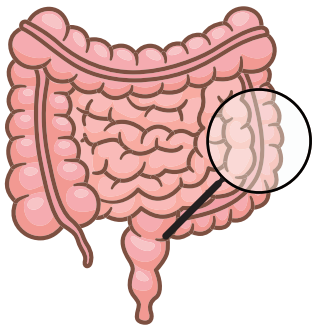
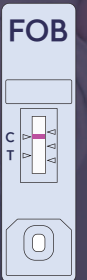
History

2023	Jan, Established AllMade Startup in Incheon ITP
	Feb, Established AllMade R&D Center & Factory
	Jun, ISO 9001, 14001, 45001, 37001 Certifications (KOSRE)
	Jul, Licensed IVD Medical Device manufacturing
	Aug, Licensed Veterinary IVD Medical Device manufacturing
2024	Jan, SI Investment (MedBank Holding, Japan)
	Feb, Venture Company Certification
2025	Mar, Seed Investment (BIGBANG Ventures)
	Nov, Selected as a promising Small and Medium Enterprise in Incheon
	Dec, KGMP Certification (MFDS)
2026	ISO 13485 Certification (LL-C)
	Jan, Headquarters Relocation

LUCI-R FOB Test (Fecal Occult Blood)

Easy to Use

High Sensitivity & Specificity



Fecal Occult Blood Test (FOB)

The Fecal Occult Blood Test is designed to detect trace amounts of blood in stool, even when not visible to the naked eye. The test helps identify bleeding within the colon and rectum, making it an important tool for screening and early detection of colorectal and rectal cancer. FOB testing is commonly recommended as a routine screening method for adults aged 50 and older.

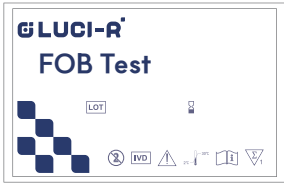


The LUCI-R FOB Test utilizes an immunochromatographic method to detect human hemoglobin in stool samples. This method offers high sensitivity and specificity and is virtually unaffected by external interference. Furthermore, the kit can be stored at room temperature and is designed for easy and convenient use.

Product Specs

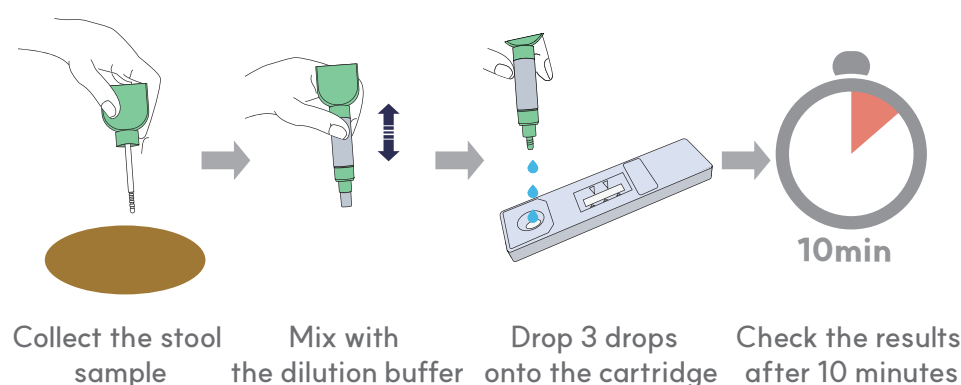
Sensitivity	96.08% (49/51)	Sample type	Stool
Specificity	97.94% (97/99)	Testing time	10 min
Storage	2-30°C	Exp.	24 month
Test type	Professional Use Only	Package	25 Tests / Box

Product Information

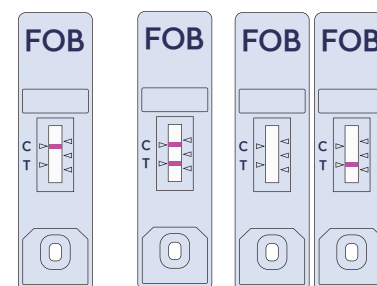
Δ Product Components

		
LUCI-R FOB Cartridge	LUCI-R FOB Buffer	Instruction

Δ Test Procedure



Δ Results



Negative Positive Invalid

Test Performance

[Result 1] Clinical performance of LUCI-R FOB Test

LUCI-R FOB Test	Result	95% CI
Limit of Detection	50 ng/ml	-
Sensitivity	96.08%	90.75% - 99.89%
Specificity	97.98%	92.89% - 99.75%

[Result 2] Correlation evaluation between LUCI-R FOB Test and a comparative medical device

Item	OPA*	PPA*	NPA*	PPV*	NPV*	Kappa*
LUCI-R FOB Test	97.33%	96.08%	97.98%	96.08%	97.98%	94%

*OPA: Overall Percent Agreement / PPA: Positive Percent Agreement / NPA: Negative Percent Agreement / PPV: Positive Predictive Value / NPV: Negative Predictive Value / Kappa: Cohen's Kappa Coefficient

Ordering information

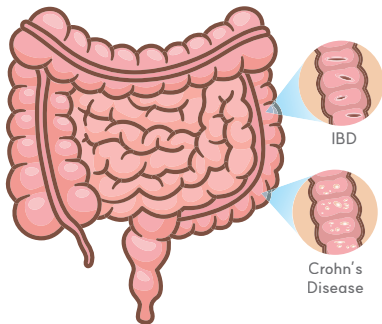
Model No.	Item	Composition	Type	Package
AMGH-01	LUCI-R FOB Test	Cartridge, Dilution buffer, Instruction	Device	25 Tests/Box



LUCI-R Calprotectin Test (Fecal Calprotectin)

Easy to Use

High Sensitivity & Specificity



Calprotectin

Calprotectin is a calcium-binding protein primarily derived from neutrophils. It is widely used as a reliable biomarker for assessing intestinal inflammation by measuring its stool concentration. Calprotectin levels increase significantly in inflammatory bowel disease (IBD), making it a valuable tool for the diagnosis and monitoring of various inflammatory conditions, including IBD, irritable bowel syndrome (IBS), Crohn's disease, and ulcerative colitis.

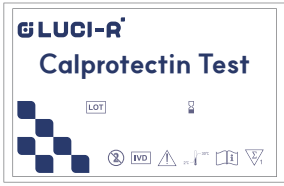


The LUCI-R Calprotectin Test utilizes an immunochromatographic method to detect calprotectin in stool samples. This method offers high sensitivity and specificity and is virtually unaffected by external interference. Furthermore, the kit can be stored at room temperature and is designed for easy and convenient use.

Product Specs

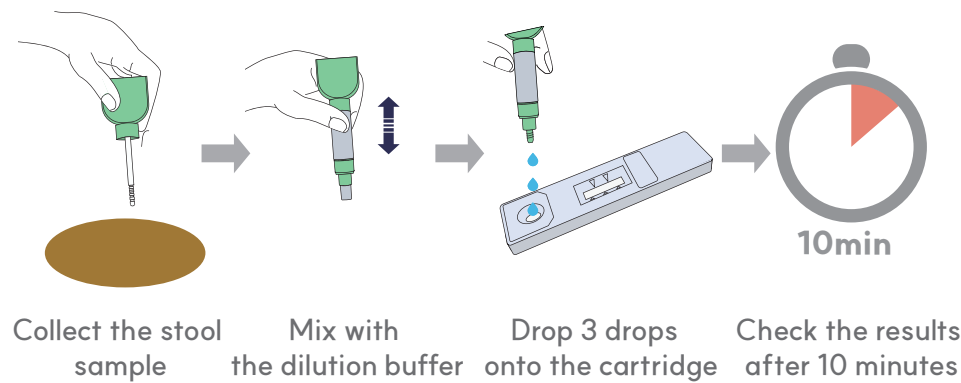
Sensitivity	98.00% (49/50)	Sample type	Stool
Specificity	97.09% (100/103)	Testing time	10 min
Storage	2-30°C	Exp.	24 month
Test type	Professional Use Only	Package	25 Tests / Box

Product Information

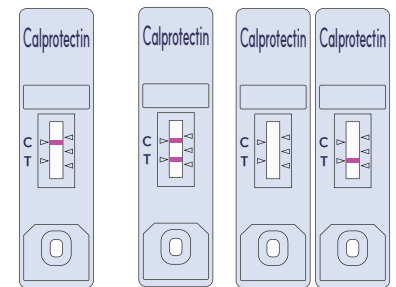
Δ Product Components

		
LUCI-R Calprotectin Cartridge	LUCI-R Calprotectin Buffer	Instruction

Δ Test Procedure



Δ Results



Negative Positive Invalid

Test Performance

[Result 1] Clinical performance of LUCI-R Calprotectin Test

LUCI-R Calprotectin Test	Result	95% CI
Limit of Detection	50 mg/Kg	-
Sensitivity	98.00%	89.39% - 99.95%
Specificity	97.09%	92.89% - 99.27%

[Result 2] Correlation evaluation between LUCI-R Calprotectin Test and a comparative medical device

Item	OPA*	PPA*	NPA*	PPV*	NPV*	Kappa*
LUCI-R Calprotectin Test	97.33%	96.08%	97.98%	96.08%	97.98%	94%

*OPA: Overall Percent Agreement / PPA: Positive Percent Agreement / NPA: Negative Percent Agreement / PPV: Positive Predictive Value / NPV: Negative Predictive Value / Kappa: Cohen's Kappa Coefficient

Ordering information

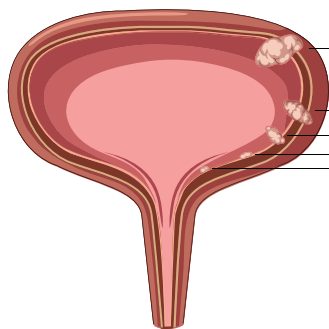
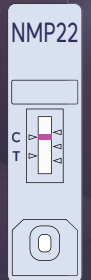
Model No.	Item	Composition	Type	Package
AMGH-03	LUCI-R Calprotectin Test	Cartridge, Dilution buffer, Instruction	Device	25 Tests/Box



LUCI-R NMP22 Test (Nuclear Matrix Protein 22)

Easy to Use

High Sensitivity & Specificity



NMP22 (Nuclear Matrix Protein 22)

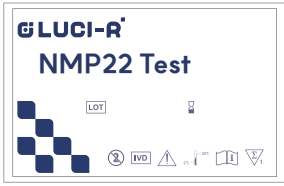


NMP22 (Nuclear Matrix Protein 22) is a structural component of the cell nucleus involved in cell division and DNA replication. It is a key biomarker for the diagnosis of bladder cancer, as elevated levels of NMP22 can be detected in urine samples. While NMP22 is present only in trace amounts in healthy individuals, significantly higher levels are observed in patients with bladder cancer, making it an effective tool for bladder cancer screening. In particular, it enables non-invasive detection of early-stage bladder cancer without the need for cystoscopy, supporting early clinical decision-making. The LUCI-R NMP22 Test utilizes an immunochromatographic method to detect NMP22 in urine samples. This method offers high sensitivity and specificity and is virtually unaffected by external interference. Furthermore, the kit can be stored at room temperature and is designed for easy and convenient use.

Product Specs

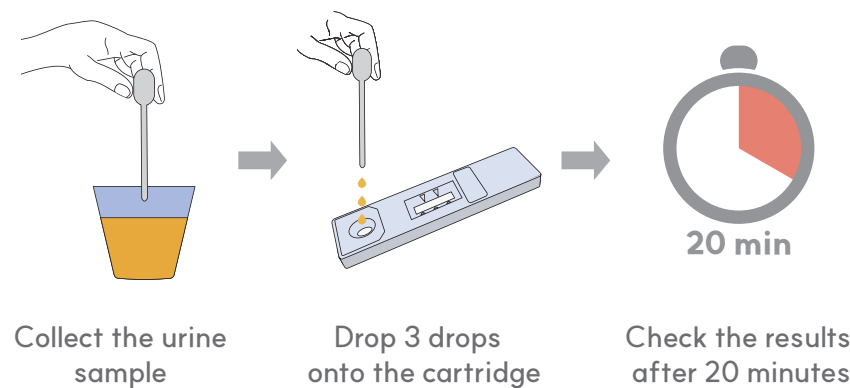
Sensitivity	96.07% (49/51)	Sample type	Urine
Specificity	97.97% (97/99)	Testing time	20 min
Storage	2-30°C	Exp.	24 month
Test type	Professional Use Only	Package	25 Tests / Box

Product Information

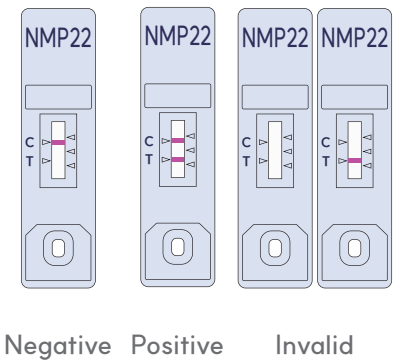
Product Components

		
LUCI-R NMP22 Cartridge	Disposable Dropper	Instruction

Test Procedure



Results



Test Performance

[Result 1] Clinical performance of LUCI-R NMP22 Test

LUCI-R NMP22 Test	Result	95% CI
Limit of Detection	10 U/ml	-
Sensitivity	96.08%	90.75% - 100%
Specificity	97.98%	95.21% - 100%

[Result 2] Correlation evaluation between LUCI-R NMP22 Test and a comparative medical device

Item	OPA*	PPA*	NPA*	PPV*	NPV*	Kappa*
LUCI-R NMP22 Test	97.33%	96.08%	97.98%	96.08%	97.98%	94.05%

*OPA: Overall Percent Agreement / PPA: Positive Percent Agreement / NPA: Negative Percent Agreement / PPV: Positive Predictive Value / NPV: Negative Predictive Value / Kappa: Cohen's Kappa Coefficient

Ordering information

Model No.	Item	Composition	Type	Package
AMGH-05	LUCI-R NMP22 Test	Cartridge, Disposable Dropper, Instruction	Device	25 Tests/Box